

Venue of the conference: Ludovika University of Public Service (main building)

Address: 1083 Budapest, Ludovika tér 2.



You can reach the conference venue from the following hotels easily by public transport. Please kindly note that no reservation or block booking has been made, conference participants are responsible for making their own reservation.

Recommended hotels:

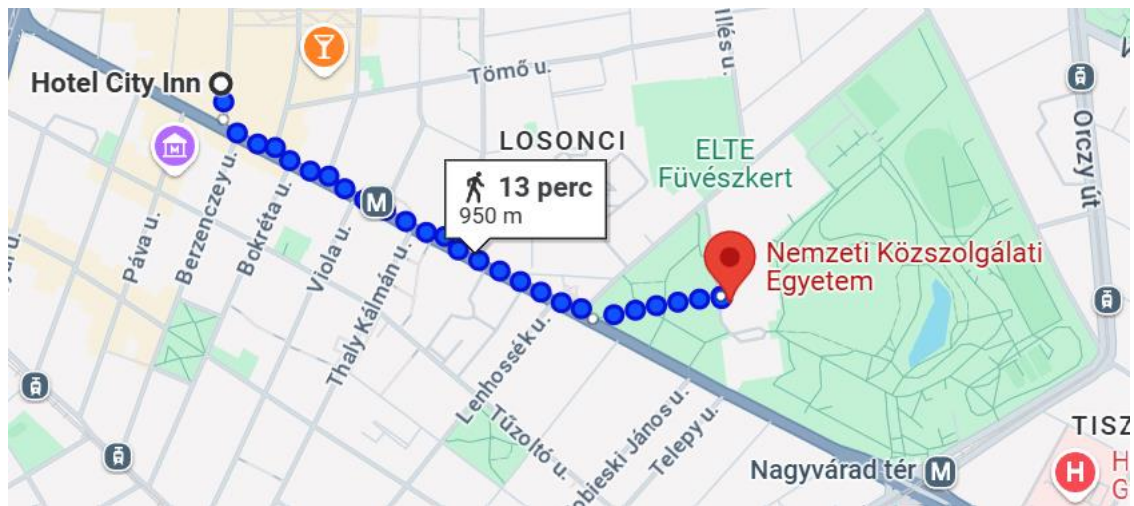
1. Hotel City Inn (page 2)
2. Mercure Budapest Korona (page 3)
3. Akeah Verdi Budapest (page 4)
4. Ibis Budapest Centrum (page 5)

1. Hotel City Inn (4 stars)

- <https://cityinn.hu/>
- 1082 Budapest, Futó street 55.
- ~ 80 EUR (person/night)



- directions, estimated time



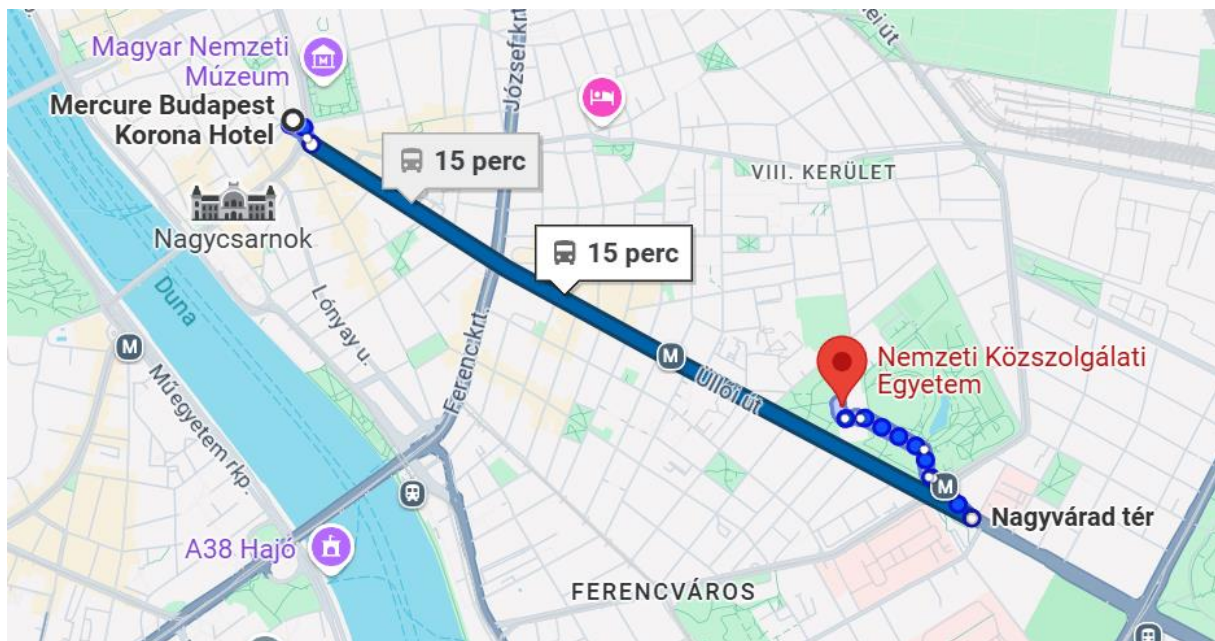
Ludovika University is reachable from Hotel City Inn in 13 minutes. You need to walk on Üllői Street, until you reach Ludovika tér.

2. Mercure Budapest Korona (4 stars)

- <https://mercurekorona.hu-budapest.com/en/>
- 1053 Budapest, Kecskeméti Street 14.
- ~ 140 EUR (person/night)



- direction, estimated time



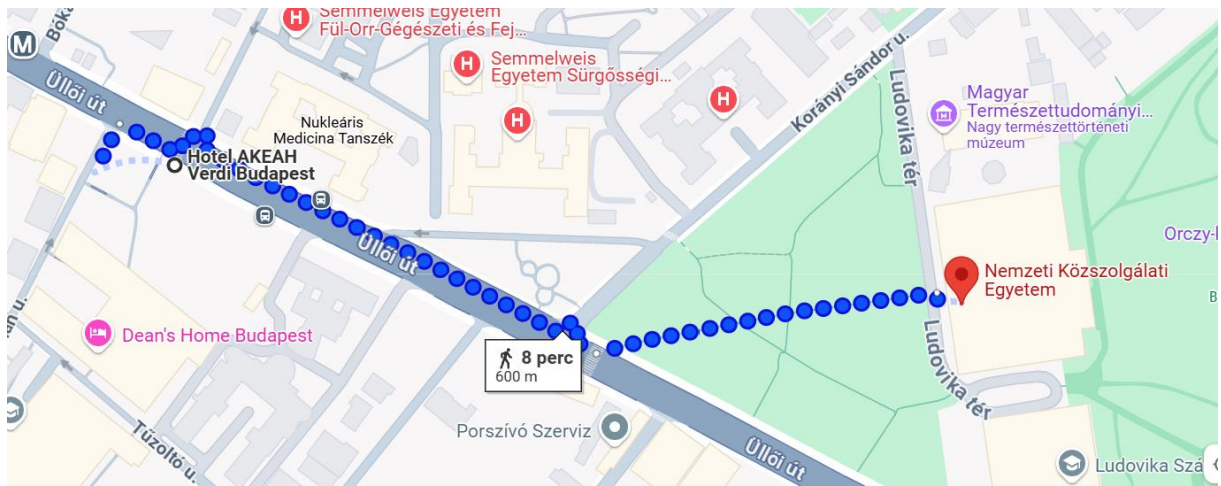
Ludovika University is reachable from Mercure Hotel Korona via metro line M3 in 15 minutes. You need to get on M3 at Kálvin square in the direction of Kőbánya-Kispest, ride 3 stops and get off at Nagyvárad square. From there, it is a 7-minute walk on Üllői Street until you reach the main building of the University.

3. Akeah Verdi Budapest (4 stars)

- <https://www.akeah.com/en/>
- 1096 Budapest, 89 Üllői Street
- ~ 70/80 EUR (person/night)



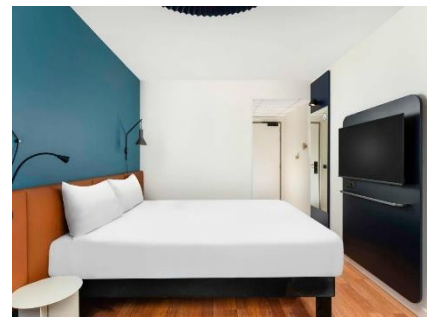
- directions, estimated time



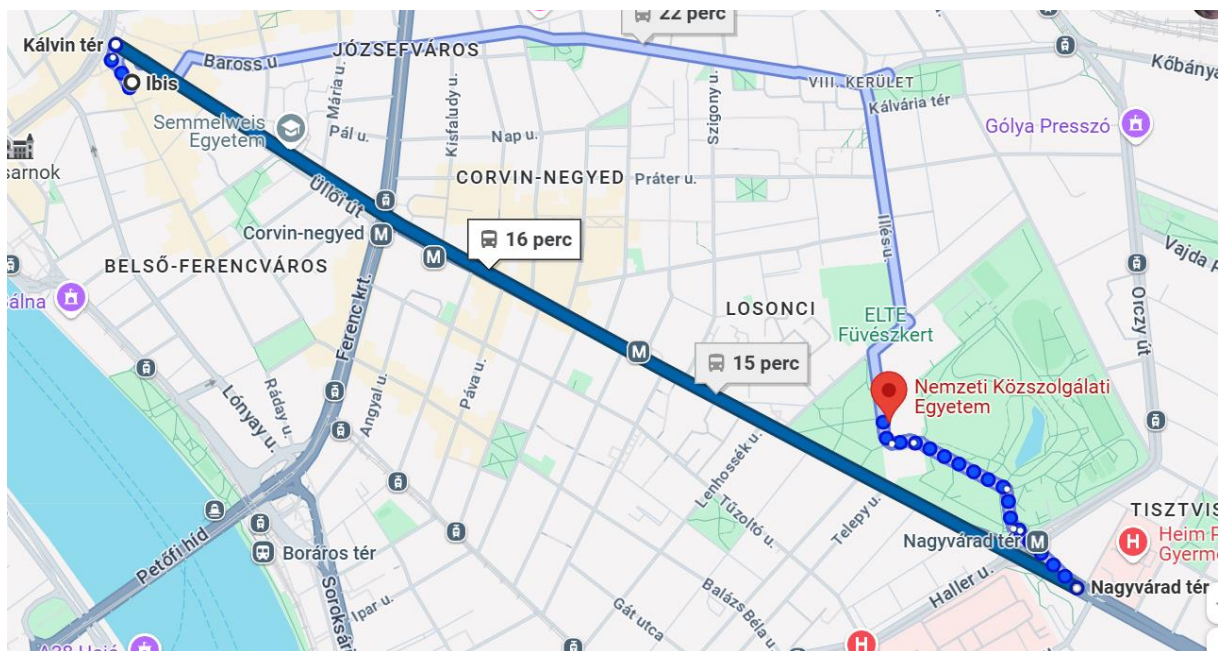
Ludovika University is reachable from Akeah Verdi Budapest by an 8-minute walk, straight on Üllői Street.

4. Ibis Budapest Centrum (4 stars)

- <https://all.accor.com/hotel/2078/index.en.shtml>
- 1092 Budapest, Ráday utca 6.
- ~ 60/70 EUR (person/night)



- directions, estimated time



Ludovika University is reachable from Ibis Budapest Centrum via metro line M3 in 16 minutes. You need to enter M3 at Kálvin square in the direction of Kőbánya-Kispest, ride 3 stops and get off at Nagyvárad square. From there, it is a 7-minute walk on Üllői Street until you reach the main building of the University.